



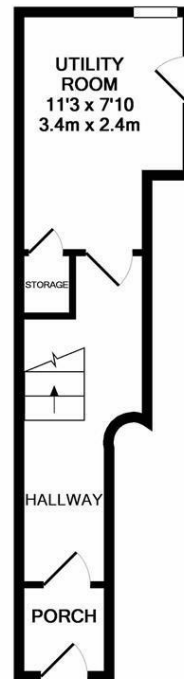
****AVAILABLE JANUARY 2026****

****FURNISHED**** A stunning, immaculately presented executive property found in the heart of Jesmond's Brandling Village! This one bedroom maisonette is in excess of 1,000sq ft and boasts a gorgeous full width lounge with feature fireplace, large kitchen diner and a fabulous bedroom in the eaves of the attic.

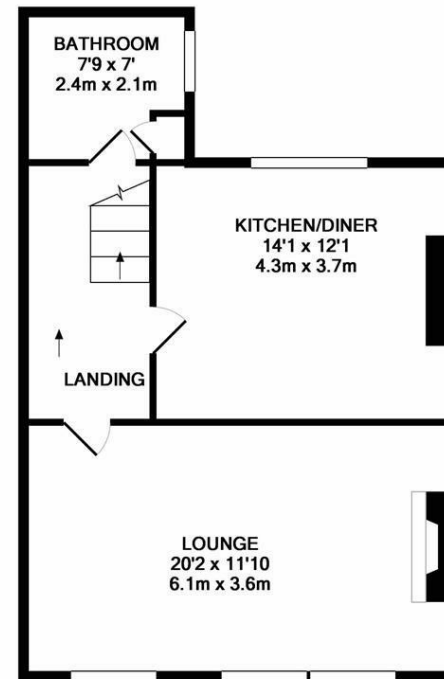
The property briefly comprises a private entrance hallway, with utility room and stairs to the first floor. The first floor comprises a fully furnished lounge, modern kitchen diner and a tiled family bathroom WC. The second floor has a large double bedroom, with Velux style windows and a separate walk in wardrobe. Externally there is a shared yard to the rear and on street permit parking to the front.

Complete with gas central heating and double glazed windows, this executive home is perfect for either a single occupant or professional couple alike and is not to be missed!

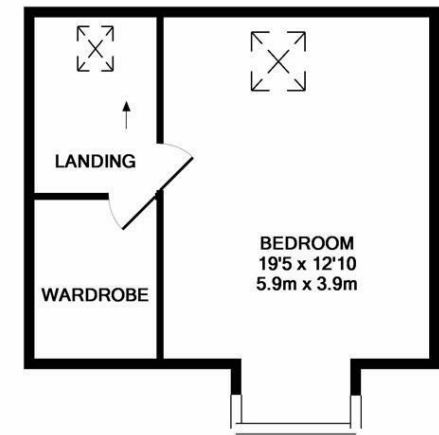
Available 30th January 2026 | £1,250pcm | Victorian Maisonette | 1,035 Sq. ft (96.1m²) | Immaculately Presented Throughout | Full Width Lounge | Modern Kitchen/Diner | Laundry/Utility Room | Bathroom WC | Furnished | GCH & DG | Brandling Village Conservation Area | Council Tax Band: A | EPC Rating: E



GROUND FLOOR
APPROX. FLOOR
AREA 178 SQ.FT.
(16.6 SQ.M.)



1ST FLOOR
APPROX. FLOOR
AREA 530 SQ.FT.
(49.2 SQ.M.)



2ND FLOOR
APPROX. FLOOR
AREA 327 SQ.FT.
(30.4 SQ.M.)

TOTAL APPROX. FLOOR AREA 1035 SQ.FT. (96.1 SQ.M.)

Whilst every attempt has been made to ensure the accuracy of the floor plan contained here, measurements of doors, windows, rooms and any other items are approximate and no responsibility is taken for any error, omission, or mis-statement. This plan is for illustrative purposes only and should be used as such by any prospective purchaser. The services, systems and appliances shown have not been tested and no guarantee as to their operability or efficiency can be given
Made with Metropix ©2017

£1,250 PCM

IMPORTANT NOTE: These particulars and the descriptions and measurements herein do not constitute representation and whilst every effort has been made to ensure accuracy, this cannot be guaranteed.

